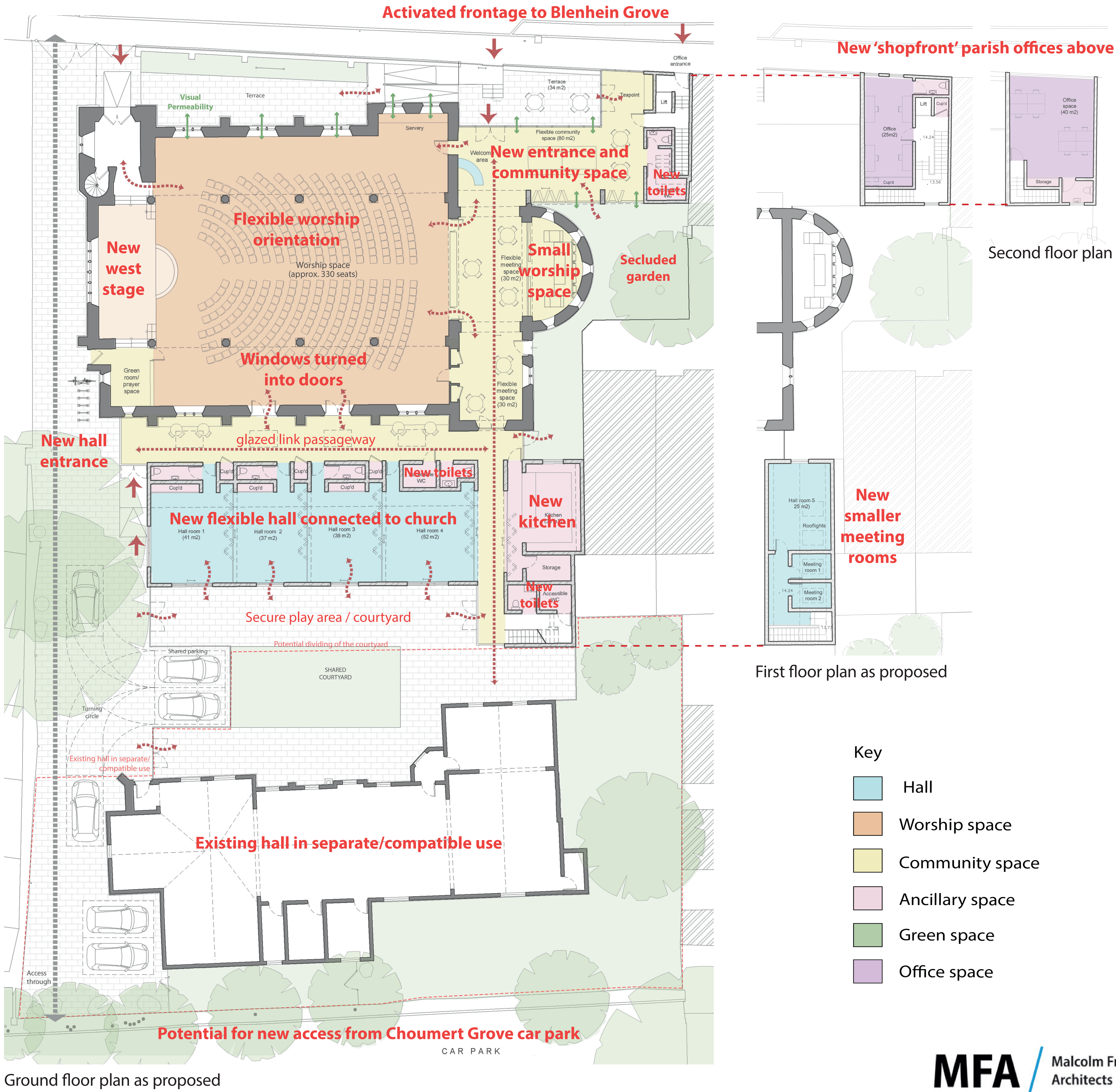


Since June 2019, the PCC of All Saints have been working with Malcolm Fryer Architects to develop a site masterplan which better serves the current and future needs of the congregation and the wider Peckham community. There is strong desire to strengthen the presence of All Saints within the lively Peckham town centre , to greatly improve the visitor welcome and support the diverse range of activities that take place at the church.

We have been looking at different ways that All Saints Peckham can achieve their vision and create the additional spaces that are needed to support and develop their mission and secure a more sustainable future for the buildings. The site masterplan that has emerged includes the provision of a new entrance and community space facing Blenheim Grove and connecting directly through to the church, new parish offices with a 'shop-front' entrance, and a new flexible hall directly connected to the south of the church (replacing the existing vicarage). The interior of the church is also proposed to be made more flexible for worship to include facing west. We would like to share these emerging ideas and receive your feedback at this early stage of the project.



All Saints Church, Peckham

Site Masterplan - May 2020

The main proposals are:

- 1. A new single level entrance pavilion and community meeting space facing Blenheim Grove, replacing the existing vestry and open to the church through the large existing archway
- 2. A three-storey 'shop-front' on Blenheim Grove housing new toilets and new parish offices on the upper floors
- 3. The creation of a new community gathering and small worship space within the existing chancel, with a low partition to the nave
- 4. A re-ordering of the nave for greater flexibility including west facing worship with the new entrance and gathering space to the rear
- 5. Demolition of the existing vicarage and the creation of a new hall to the south of the church, with access from the nave providing flexible rooms, central kitchen, toilets and smaller meeting rooms
- 6. Re-purposing of the old hall for comparable community use



The proposed new hall from the south, showing the two new volumes and glazed linking elements



The proposed new entrance pavilion and 'shopfront' parish offices facing Blenheim Grove



Internal view of the new all looking west, with clerestory views of the church



View from the west stage towards the chancel and screen with the direction of worship re-oriented



View to the proposed west stage with the direction of worship re-oriented



The proposed new welcome area looking through to the church and hall



View of the new entrance from the chancel with the arch opened up



View of the internal linking passageway between the South Aisle of the church and the new hall

We are very excited about these initial ideas and we would love to hear your views. Please leave them with us or contact Tom Hardyman, Operations Director, at Tom.hardyman@allsaintspeckham.org.uk



The proposed north elevation of the church to Blenheim Grove